



**#1 • Organizer Full of Assorted Horning Stones**

Organizer Full of Assorted Horning Stones

Notes



**#2 • Mikrotest Thickness Gauge, Phototachometer +**

Mikrotest Thickness Gauge, Digital Infrared Phototachometer, Starrett Dial Test Indicator and Microfinish Comparator

Notes



**#3 • Assorted Sunnen Mandrels**

Assorted Sunnen Mandrels

Notes



**#4 • Cattron Theimeg Device**

Cattron Theimeg Device

Notes



**#5 • Set of Digital Micrometers**

Set of Digital Micrometers

Notes



**#6 • Dwyer Instrument, Aminco-Brenner Magne Gauge +**

Dwyer Instrument, Aminco-Brenner Magne Gauge +

Notes



**#7 • Air Pressure Gauge, Caliber**

Air Pressure Gauge, Caliber

Notes



**#8 • Industrial Scientific TMX412 Device**

Industrial Scientific TMX412 Device

Notes



**#9 • Marsh Stencil Board Cutter - Model S 3/4"**

Marsh Stencil Board Cutter - Model S 3/4"

Notes



**#10 • AC Tech Intelligent Drive, MC Series**

AC Tech Intelligent Drive, MC Series

Notes



**#11 • Posi Lock Gear and Bearing Puller**

Posi Lock Gear and Bearing Puller

Notes



**#12 • Hacona C-320 Heat Sealer**

Hacona C-320 Heat Sealer

Notes



**#13 • Assorted Drill Bits, Bores and Cutter Bits**

Assorted Drill Bits, Bores and Cutter Bits

Notes



**#14 • Spade Drills, Collets, Tap Tools and more**

Spade Drills, Collets, Tap Tools and more

Notes



**#15 • Stauff Pressure Check Kit**

Stauff Pressure Check Kit

Notes



**#16 • Dumore Tool Post Grinder**

Dumore Tool Post Grinder

Notes



**#17 • Pipe Bender**

Pipe Bender

Notes



**#18 • Assorted Pipe Threads**

Assorted Pipe Threads

Notes



**#19 • Feder 4" Benchtop Shear**

Feder 4" Benchtop Shear

Notes



**#20 • Central Pneumatic Air Hammer - Pair**

Central Pneumatic Air Hammer - Pair

Notes



**#21 • Taper Drill Sleeve Adapters**

Taper Drill Sleeve Adapters

Notes



**#22 • Assorted Bits, Clamps and more**

Assorted Bits, Clamps and more

Notes



**#23 • Assorted Drill Bits**

Assorted Drill Bits

Notes



**#24 • Assorted Drill Bits and Punches**

Assorted Drill Bits and Punches

Notes



**#25 • Assorted Lathe Dogs and more**

Assorted Lathe Dogs and more

Notes



**#26 • Assorted Tap and Die Instruments, Milling Tools**

Assorted Tap and Die Instruments, Milling Tools

Notes



**#27 • Assorted Tap and Die Instruments, Milling Tools**

Assorted Tap and Die Instruments, Milling Tools

Notes



**#28 • Assorted Milling Tools, Taps and more**

Assorted Milling Tools, Taps and more

Notes



**#29 • Assorted Milling Tools, Taps and more**

Assorted Milling Tools, Taps and more

Notes



**#30 • Assorted Milling Tools, Taps**

Assorted Milling Tools, Taps

Notes



**#31 • Assorted Milling Tools, Taps**

Assorted Milling Tools, Taps

Notes



**#32 • Assorted Milling Tools, Taps**

Assorted Milling Tools, Taps

Notes



**#33 • Dividing Head Set**

Set of Milling Tools

Notes



**#34 • Lathe Change Gear Set**

Set of Milling Blades

Notes



**#35 • Pipe Thread Taps**

Pipe Thread Taps

Notes



**#36 • 1"-2" Ridgid Pipe Threading Tool**

Ridgid Pipe Threading Tool

Notes



**#37 • Ridgid Pipe Cutter**

Ridgid Pipe Cutter

Notes



**#38 • Assorted Reamers**

Assorted Pipe Expanders

Notes



**#39 • Four Assorted Taft-Peirce Snap Gauge**

Four Assorted Taft-Peirce Snap Gauge

Notes



**#40 • Assorted Taft-Peirce Snap Gauge**

Assorted Taft-Peirce Snap Gauge

Notes



**#41 • Landis Pipe Threader Head**

Pipe Bender Tool

Notes



**#42 • Assortment of Concrete Anchors**

Assortment of Tap and Drill Bolts

Notes



**#43 • 1/4" Drill, Chuck and Milling Tools**

1/4" Drill, Chuck and Milling Tools

Notes



**#44 • Hardinge #2 Lathe Speed Chuck and Collets**

Hardinge Brothers Tap and Die Tool Kit

Notes



**#45 • (3) Grinder Centers**

(3) Rotary Table Tail Stocks

Notes



**#46 • (Pair) Machine Tool Parallels 6" x 12"**

Magic City Machine Tool Co. Interlocking Parallels  
Milling Machinist Blocks

Notes



**#47 • Precision Machine Vice**

Precision Machine Vice

Notes



**#48 • Ellis Dividing Head Lathe Chuck**

See pictures for details.

Notes



**#49 • Assorted Drill Bits, Taps and More**

Assorted Drill Bits, Taps and More

Notes



**#50 • Two Sets of Lathe Collets**

Two Sets of Lathe Collets

Notes



**#51 • Two Sets of Lathe Collets**

Two Sets of Lathe Collets

Notes



**#52 • Merit Grind-O-Flex - Nine Boxes**

Grit - 120 16"x3" x 1-3/4" Max RPM 2,400

Notes



**#53 • Merit Grind-O-Flex - Four Boxes**

Grit - 180 12"x2" x 1-3/4" Max RPM 3,000

Notes



**#54 • Assorted Machinist Tooling**

Assorted Machinist Tooling

Notes



**#55 • 12"x18" Black Granite Surface Plate**

Black Granite Surface Plate

Notes



**#56 • Assorted Milling Tools And Chuck Parts**

Assorted Milling Tools And Chuck Parts

Notes



**#57 • Assorted Lathe Chucks**

Assorted Lathe Chucks

Notes



**#58 • Assorted Lathe Parts, Aloris Tool Post**

Assorted Lathe Parts, Aloris Tool Post

Notes



**#59 • Lot of Molds**

Lot of Molds

Notes



**#60 • Steel Surface Plate**

Steel Surface Plate

Notes



**#61 • Large Assortment of Milling Cutting Tools**

Large Assortment of Milling Cutting Tools

Notes



**#62 • Assorted Milling Tools**

Assorted Milling Tools

Notes



**#63 • Assorted Drill Bits and Milling Tools**

Assorted Drill Bits and Milling Tools

Notes



**#64 • Large Lot of Pipe Cutters and Wheels**

Large Lot of Pipe Cutters and Wheels

Notes



**#65 • (3) Lathe Dogs**

(3) Lathe Dogs

Notes



**#66 • Machinist Vice and Tool Posts**

Machinist Vice and Tool Posts

Notes



**#67 • Mallory Precision Capacitor - 18 Boxes**

Mallory Precision Capacitor - 18 Boxes

Notes



**#68 • Reflectoscope and Spark Eroder**

Reflectoscope and Spark Eroder

Notes



**#69 • Miller Chromel C Alloy Welding Wire - 60% Ni**

Spools of Wire - Four Spools

Notes



**#70 • No. 5 Precise Trimming Board**

No. 5 Precise Trimming Board

Notes



**#71 • Lathe Steady Rest**

Lathe Steady Rest

Notes



**#72 • Assorted Wrenches, Milling Bits and more**

Assorted Wrenches, Milling Bits and more

Notes



**#73 • Large Lot of Welding Rods**

Large Lot of Welding Rods

Notes



**#74 • Large Lot of Aluminum Welding Wire - 8 Boxes**

Large Lot of Aluminum Welding Wire - 8 Boxes

Notes



**#75 • Three Spools of Welding Wire**

Three Spools of Welding Wire

Notes



**#76 • Welding Rods, Welding Helmet and more**

Welding Rods, Welding Helmet and more

Notes



**#77 • Files, Spools of Wire, Pure Air Tool and Sprayer**

Files, Spools of Wire, Pure Air Tool and Sprayer

Notes



**#78 • Pair of Angle Sanders/Grinder and Electrical Cords**

Pair of Angle Sanders/Grinder and Electrical Cords

Notes



**#79 • Large Vice and Hoist**

Large Vice and Hoist

Notes



**#80 • Assorted Mobile Jaws and Clamps**

Assorted Mobile Jaws and Clamps

Notes



**#81 • Three Large C-Clamps**  
Three Large C-Clamps

Notes



**#82 • Four Large C-Clamps**  
Four Large C-Clamps

Notes



**#83 • Three Large C-Clamps**  
Three Large C-Clamps

Notes



**#84 • Two Large C-Clamps**  
Two Large C-Clamps

Notes



**#85 • Six Assorted C-Clamps**  
Six Assorted C-Clamps

Notes



**#86 • Pair of Vices**  
Pair of Vices

Notes



**#87 • Milwaukee Magnetic Drill**  
Milwaukee Drill

Notes



**#88 • Magnetool BL-2000 Battery Operated Magnetic Lift**

Notes



**#89 • Electric Drill, Assorted Drill Bits and more**  
Electric Drill, Assorted Drill Bits and more

Notes



**#90 • NEW Align AL-500P Power Table Feed**

Notes



#91 • NEW Align AL-500P Power Table Feed

Notes



#92 • NEW Align AL-500P Power Table Feed

Notes



#93 • NEW Align AL-500P Power Table Feed

Notes



#94 • NEW Align AL-500P Power Table Feed

Notes



#95 • NEW Align AL-500P Power Table Feed

Notes



#96 • Stainless Steel 11"x6"x6" Electrical Enclosure

Notes



#97 • Lathe Dog  
Lathe Dog

Notes



#98 • 12" Rotary/Angle Welding Positioner

Notes



#99 • Assorted Lifting/Rigging Chains

Notes



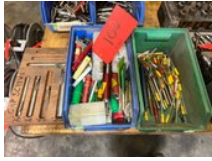
#100 • Sledge Hammer and Level  
Sledge Hammer and Level

Notes



**#101 • Large Assortment of Taps, End Mills, and Collets**

Notes



**#102 • Assortment of End Mills and More**

Notes



**#103 • Assortment of End Mills, Taps, and Drill Bits**

Notes



**#104 • Assorted Milling Tools**

Assorted Milling Tools

Notes



**#105 • Large Assortment of Metal Pipe Fittings**

Large Assortment of Metal Pipe Fittings

Notes



**#106 • Klutch Air Hose Reel - 3/8" x 50' Cold Flex**

Klutch Air Hose Reel - 3/8" x 50' Cold Flex

Notes



**#107 • Klutch Air Hose Reel - 3/8" x 50' Auto Rewind**

Klutch Air Hose Reel - 3/8" x 50' Auto Rewind

Notes



**#108 • Klutch Air Hose Reel - 3/8" x 50' Cold Flex**

Klutch Air Hose Reel - 3/8" x 50' Cold Flex

Notes



**#109 • Klutch Air Hose Reel - 3/8" x 50' Cold Flex**

Klutch Air Hose Reel - 3/8" x 50' Cold Flex

Notes



**#110 • Klutch Air Hose Reel - 3/8" x 50' Auto Rewind**

Klutch Air Hose Reel - 3/8" x 50' Auto Rewind

Notes



**#111 • Klutch Air Hose Reel - 3/8" x 50' Auto Rewind**

Klutch Air Hose Reel - 3/8" x 50' Auto Rewind

Notes



**#112 • Klutch Air Hose Reel - 3/8" x 50' Auto Rewind**

Klutch Air Hose Reel - 3/8" x 50' Auto Rewind

Notes



**#113 • Klutch Air Hose Reel - 3/8" x 50' Auto Rewind**

Klutch Air Hose Reel - 3/8" x 50' Auto Rewind

Notes



**#114 • Jupiter Pneumatics Air Hose Reel - 3/8" x 50'**

Jupiter Pneumatics Air Hose Reel - 3/8" x 50'

Notes



**#115 • Jupiter Pneumatics Air Hose Reel - 3/8" x 50'**

Jupiter Pneumatics Air Hose Reel - 3/8" x 50'

Notes



**#116 • Three Hose Reels**

Three Hose Reels

Notes



**#117 • Large Assortment of Welding Rods and Wire**

Large Assortment of Welding Rods and Wire

Notes



**#118 • Stack of Mount-Up Radiac Abrasive Grinding Wheels**

Stack of Mount-Up Radiac Abrasive Grinding Wheels  
20"x1.5"x8"

Notes



**#119 • Wire Crate Full of Tooling, Collets and more**

Wire Crate Full of Tooling, Collets and more

Notes



**#120 • Dayton Gas Cylinder Truck**

Dayton Gas Cylinder Truck

Notes



**#121 • Anthony Gas Cylinder Cart**  
Anthony Gas Cylinder Cart

Notes



**#122 • 28" Graham Precision Rotary Table**

Notes



**#123 • Miller Deltaweld 302 Welder W/ Wire Feeder**  
Cannot Read White Tag with more details

Notes



**#124 • Machinist T-Slot Tables**

Notes



**#125 • 36"x48"x6" T-Slot Granite Surface Plate & Stand**

Notes



**#126 • Vevor Rotary Welding Postioner**  
Vevor Rotary Welding Postioner

Notes



**#127 • Rockwell Hardness Tester**  
Rockwell Hardness Tester

Notes



**#128 • Rockwell Hardness Tester-AR-150A**  
Rockwell Hardness Tester

Notes



**#129 • Metal Work Table**  
Metal Work Table

Notes



**#130 • (2) 17"x6" Angle Blocks**

Notes



#131 • 4"x20" Angle Block

Notes



#132 • 12"x12" Angle Block

Notes



#133 • 21"x26" Angle Block

Notes



#134 • Rolling Heavy Duty Metal Cart  
Brackets on the cart are NOT included

Notes



#135 • 15" Lathe Chuck

Notes



#136 • 18" Slotted Face Plates

Notes



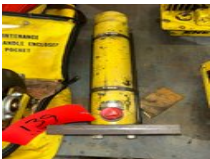
#137 • Enerpac Hush-pup 10,000 PSI  
Hydraulic Pump

Notes



#138 • Enerpac Hush-pup 10,000 PSI  
Hydraulic Pump

Notes



#139 • Enerpac Cylinder  
Enerpac Cylinder

Notes



#140 • Salalift L1850 Tripod Safety Winch -  
350lb

Notes



**#141 • Miller M52/50" Lanyard 3/16" ss**

Notes



**#142 • Metal Work Table**

Contents are NOT included

Notes



**#143 • Klutch Air Hose Reel 3/8" x 50' Cold Flex**

Klutch Air Hose Reel 3/8" x 50' Cold Flex

Notes



**#144 • Klutch Air Hose Reel 3/8" x 50' Auto Rewind**

Klutch Air Hose Reel 3/8" x 50' Auto Rewind

Notes



**#145 • Air Hose Reel**

Air Hose Reel

Notes



**#146 • Pair of Work Lights**

Pair of Work Lights

Notes



**#147 • 1/4" Dot 1913 Air Brake Hose**

Notes



**#148 • Approximately 30 Isuzu Filters**

Approximately 30 Isuzu Filters

Notes



**#149 • Pair of Ironton Cord Reel**

Pair of Ironton Cord Reel

Notes



**#150 • Set of Eleven Air Filters**

Set of Eleven Air Filters

Notes



**#151 • Approximately 15 Filters**  
Approximately 15 Filters

Notes



**#152 • Reverse Ultipor Filter Cartridges (28)**  
Reverse Ultipor Filter Cartridges (28)

Notes



**#153 • AC Fuel Filters (T552) Two Case, 24ct**  
AC Fuel Filters (T552) Two Case, 24ct

Notes



**#154 • Assorted Fuel Filters**  
Assorted Fuel Filters

Notes



**#155 • Approximately 25 Filters**  
Approximately 25 Filters

Notes



**#156 • Approximately 15 Filters**  
Approximately 15 Filters

Notes



**#157 • Approximately 25 Filters**  
Approximately 25 Filters

Notes



**#158 • Approximately 18 Filters**  
Approximately 18 Filters

Notes



**#159 • Approximately 16 Filters**  
Approximately 16 Filters

Notes



**#160 • Approximately 10 Filters**  
Approximately 10 Filters

Notes



**#161 • Approximately 13 Filters**  
Approximately 13 Filters

Notes



**#162 • Approximately 20 Filters**  
Approximately 20 Filters

Notes



**#163 • Approximately 20 Filters**  
Approximately 20 Filters

Notes



**#164 • Approximately 22 Filters**  
Approximately 22 Filters

Notes



**#165 • Approximately 18 Lube Oil Filters**  
Approximately 18 Lube Oil Filters

Notes



**#166 • Approximately 15 Air Filters**  
Approximately 15 Air Filters

Notes



**#167 • Approximately 15 Oil Filters, Coolant Conditioner**  
Approximately 15 Oil Filters, Coolant Conditioner

Notes



**#168 • Assorted Filters**  
Assorted Filters

Notes



**#169 • Water and Fuel Separators**  
Water and Fuel Separators

Notes



**#170 • Speed Odometer Part, Fuel Tank Sender, Parts**  
Also included is a M/R Backcover Split and more Parts

Notes



**#171 • Shaft Rear Bearing - Seven Pieces**

Shaft Rear Bearing - Seven Pieces

Notes



**#172 • Lot of International Truck Parts**

(6) Bushings?

Notes



**#173 • Cylinder Housing - Lot of Two**

Cylinder Housing - Lot of Two

Notes



**#174 • Williams Control Pedals - Lot of Three**

Williams Control Pedals - Lot of Three

Notes



**#175 • Two Boxes of Assorted Parts**

Two Boxes of Assorted Parts

Notes



**#176 • Lot of Five International Switch Boards**

Lot of Five International Switch Boards

Notes



**#177 • Misc. Suspension Parts**

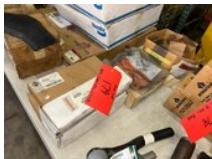
Notes



**#178 • Baring Kit, Panels, Switches and more Parts**

Approximately Ten Misc Parts

Notes



**#179 • Bolts, Support Brackets, King Pin Set**

Bolts, Support Brackets, King Pin Set

Notes



**#180 • Shields, Filters, Brackets, Spring Compressor+**

Shields, Filters, Brackets, Spring Compressor+

Notes



**#181 • Misc International Parts**

Misc International Parts

Notes



**#182 • Misc Cables and Electronics**

Misc Cables and Electronics

Notes



**#183 • Harnesses, Cables, Fuel Pressure Adaptors and more**

Harnesses, Cables, Fuel Pressure Adaptors and more

Notes



**#184 • Lot of Three Renewed Injector Kits**

Lot of Three Renewed Injector Kits

Notes



**#185 • Lot of Four Assorted Allison Transmission Parts**

Lot of Four Assorted Allison Transmission Parts

Notes



**#186 • Pair of Hooks and a Pintle Hitch**

Pair of Hooks and a Pintle Hitch

Notes



**#187 • Navistar DEF Doser Cleaning Kit**

Navistar DEF Doser Cleaning Kit

Notes



**#188 • Two Brake Calibers, Tube, Housing and more**

Two Brake Calibers, Tube, Housing and more

Notes



**#189 • Navistar Coolant Flushing Adapter Kit**

Navistar Coolant Flushing Adapter Kit

Notes



**#190 • Emmission Breakout Harness Kits - Three Trays**

Emmission Breakout Harness Kits - Three Trays

Notes



**#191 • Sensor Breakout Harness Kits - Three Trays**

Sensor Breakout Harness Kits - Three Trays

Notes



**#192 • Big Bore Breakout Harness Kits - Three Trays**

Big Bore Breakout Harness Kits - Three Trays

Notes



**#193 • Misc Harness Parts - Three Trays (One is 1/2 Full)**

Misc Harness Parts - Three Trays (One is 1/2 Full)

Notes



**#194 • Assortment of Harnesses and More**

Assortment of Harnesses and More

Notes



**#195 • Six Assorted Filters**

Six Assorted Filters

Notes



**#196 • Approximately 13 Assorted Filters**

Approximately 13 Assorted Filters

Notes



**#197 • Approximately 12 Assorted Filters**

Approximately 12 Assorted Filters

Notes



**#198 • Napa Air Filter**

One to Two?

Notes



**#199 • EGR Leak Detection Kit**

EGR Leak Detection Kit

Notes



**#200 • Hickok Breakout Box**

Hickok Breakout Box

Notes



**#201 • Pro-Link Plus Product Locator System**

Pro-Link Plus Product Locator System

Notes



**#202 • MaxxFace ECM Cable**

MaxxFace ECM Cable

Notes



**#203 • Navistar ACM Breakout Harness**

Navistar ACM Breakout Harness

Notes



**#204 • Overlay for 2010 MaxxFace 7 ECM Cable**

Overlay for 2010 MaxxFace 7 ECM Cable

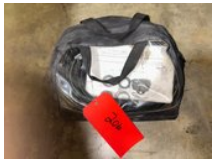
Notes



**#205 • Body Controller Breakout Harness**

Body Controller Breakout Harness

Notes



**#206 • Navistar Cylinder Performance Analyzer**

Navistar Cylinder Performance Analyzer

Notes



**#207 • International Toroshift Trans Tool Kit**

International Toroshift Trans Tool Kit

Notes



**#208 • International Engine Service Tool Kit**

International Engine Service Tool Kit

Notes



**#209 • International MaxxFace Supply Tool Kit**

International MaxxFace Supply Tool Kit

Notes



**#210 • International Toroshift Tool Kit**

International Toroshift Tool Kit

Notes



**#211 • Navistar Exhaust Gas Recirculation Leak Detect**

Navistar Exhaust Gas Recirculation Leak Detect

Notes



**#212 • International Essential Tool Kit**

International Essential Tool Kit

Notes



**#213 • Kent-Moore Steering Knuckle Service Kit**

Kent-Moore Steering Knuckle Service Kit

Notes



**#214 • International CF Truck Tool Kit**

International CF Truck Tool Kit

Notes



**#215 • Kent-Moore Pro-Link 9000**

Kent-Moore Pro-Link 9000

Notes



**#216 • International MaxxForce 11-13 Tool Kit**

International MaxxForce 11-13 Tool Kit

Notes



**#217 • Kent-Moore Injector Tube Reconditioning Set**

Kent-Moore Injector Tube Reconditioning Set

Notes



**#218 • International 11 - 13 MaxxForce Engine Tool Kit**

International 11 - 13 MaxxForce Engine Tool Kit

Notes



**#219 • International Pressure Test Kit**

International Pressure Test Kit

Notes



**#220 • Oil Pressure Gauge Kit**

Oil Pressure Gauge Kit

Notes



**#221 • Cummins Data Link Adapter Kit**  
Cummins Data Link Adapter Kit

Notes



**#222 • CAT Communication Adapter Group**  
CAT Communication Adapter Group

Notes



**#223 • Cummins Inline I Adapter Kit**  
Cummins Inline I Adapter Kit

Notes



**#224 • CAT Fuel Generator Tool Kit**  
CAT Fuel Generator Tool Kit

Notes



**#225 • CAT Communication Adapter II Group**  
CAT Communication Adapter II Group

Notes



**#226 • Navistar High Temp EGR Core Puller**  
Navistar High Temp EGR Core Puller

Notes



**#227 • CAT Communication Adapter Group Device**  
CAT Communication Adapter Group Device

Notes



**#228 • NaviStar Service Port Electrical Diag. Connector**  
NaviStar Service Port Electrical Diag. Connector

Notes



**#229 • NaviStar EGR Cleaning Kit**  
NaviStar EGR Cleaning Kit

Notes



**#230 • NaviStar Injector Sleeve Remover**  
NaviStar Injector Sleeve Remover

Notes



**#231 • NaviStar EGR Cooler Pressure Test Kit**

NaviStar EGR Cooler Pressure Test Kit

Notes



**#232 • NaviStar Coolant Flushing Adapters**

NaviStar Coolant Flushing Adapters

Notes



**#233 • NaviStar Combustion in Cooling System Tester**

NaviStar Combustion in Cooling System Tester

Notes



**#234 • Louisville 6' Step Ladders - Lot of Two**

Louisville 6' Step Ladders - Lot of Two

Notes



**#235 • 6' Werner Step Ladder - Lot of Two**

6' Werner Step Ladder - Lot of Two

Notes



**#236 • Louisville and Werner 6' Step Ladder - Lot of Two**

Louisville and Werner 6' Step Ladder - Lot of Two

Notes



**#237 • Louisville and Werner 6' Step Ladder - Lot of Two**

Louisville and Werner 6' Step Ladder - Lot of Two

Notes



**#238 • Louisville 6' Step Ladder - Lot of Two**

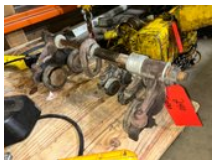
Louisville 6' Step Ladder - Lot of Two

Notes



**#239 • 600 lb. Harrington Chain Hoist w/ Tractor Drive**

Notes



**#240 • Heavy Duty Trolley**

Heavy Duty Trolley

Notes



**#241 • Wright-Way Chain Hoist with Trolley**  
Wright-Way Chain Hoist with Trolley

Notes



**#242 • 1 Ton DeMag Chain Hoist with Trolley**

Notes



**#243 • Caldwell Life-Truc Forklift Rigging Boom**

Notes



**#244 • Budgit One Ton Chain Hoist**  
Budgit One Ton Chain Hoist

Notes



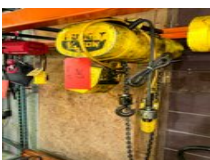
**#245 • Budgit 1/4 Ton Chain Hoist**  
Budgit 1/4 Ton Chain Hoist

Notes



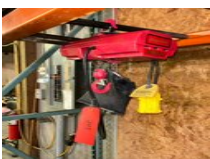
**#246 • Budgit 1/4 Ton Chain Hoist**  
Budgit 1/4 Ton Chain Hoist

Notes



**#247 • Budgit 1/4 Ton Chain Hoist**  
Budgit 1/4 Ton Chain Hoist

Notes



**#248 • Dayton 300lb Chain Hoist**  
Dayton 300lb Chain Hoist

Notes



**#249 • NEW Harrington One Ton Electric Hoist w/ Tractor D**  
NEW Harrington One Ton Electric Hoist w/ Tractor Drive

Notes



**#250 • Ingersoll-Rand 4,000lb Pneumatic/Air Chain Hoist**

Notes



**#251 • Konecranes 1/2 Ton Chain Hoist with Trolley**

Notes



**#252 • CM Chisholm-Moore 1 Ton Chain Hoist with Trolley**

Notes



**#253 • CM 1/2 Ton Chain Hoist**  
CM 1/2 Ton Chain Hoist

Notes



**#254 • Kundel 1 Ton Free Standing Jib Crane**

Notes



**#255 • Kundel 1 Ton Free Standing Jib Crane**

Notes



**#256 • NEW Gorbel 2 Ton Free Standing Gantry Crane**

Notes



**#257 • NEW Pfannenberg Air Conditioner**

Notes



**#258 • (5 Times Bid) Solar Panels (HT72-18x) 545 Watts**

By the Piece - 5x your bid

Notes



**#259 • (5 Times Bid) Solar Panels (HT72-18x) 545 Watts**

By the Piece - 5x your Bid

Notes



**#260 • (10 Times Bid) Solar Panels (HT72-18x) 545 Watts**

By the Piece - 10x your bid

Notes



**#261 • (11 Times Bid) Solar Panels (HT72-18x) 545 Watts**

By the Piece - 11x your bid

Notes



**#262 • Lincoln Arc Welder - Idealarc 250**

Lincoln Arc Welder - Idealarc 250

Notes



**#263 • 7.5 HP Baldor Pedestal Grinder-Buffer**

Notes



**#264 • 14" Brilliant Metro Miter Cut Off Saw**

Notes



**#265 • 16" Kalamazoo Metal Cutting Band Saw**

Kalamazoo Metal Cutting Band Saw

Notes



**#266 • 16" Kalamazoo Metal Cutting Band Saw**

Notes



**#267 • Walker-Turner Drill Press**

Walker-Turner Drill Press

Notes



**#268 • Delta Model 20 Drill Press**

Delta Model 20 Drill Press

Notes



**#269 • Walker Turner Drill Press**

Walker Turner Drill Press

Notes



**#270 • Clausing Drill Press with Auto-Feed**

Notes



**#271 • Allen Bradley Drill Press**

Allen Bradley Drill Press

Notes



**#272 • Drill Press**

Drill Press

Notes



**#273 • DoAll 585T Drill Press**

DoAll 585T Drill Press

Notes



**#274 • Packard Precision HO Drill Press Model 1600 HDF**

Packard Precision HO Drill Press Model 1600 HDF

Notes



**#275 • The Sigourney Tool Co. Sensitive Drilling Machine**

The Sigourney Tool Co. Sensitive Drilling Machine

Notes



**#276 • Linley Milling Machine**

Linley Milling Machine

Notes



**#277 • Sanding Machine (Missing Motor)**

Sanding Machine (Missing Motor)

Notes



**#278 • 4" EngelBerg Huller CoBelt Sander**

Notes



**#279 • Jet 6" Pedestal Shop Bench Grinder**

Jet 6" Pedestal Shop Bench Grinder

Notes



**#280 • Wilton Sander, Abrasive Finishing Machine**

Wilton Sander, Abrasive Finishing Machine

Notes



**#281 • Delta Milwaukee Toolmaker Grinder**

Delta Milwaukee Toolmaker Grinder

Notes



**#282 • The J.T. Wright Paper Cutter, Book Binding Machine**

The J.T. Wright Paper Cutter, Book Binding Machine

Notes



**#283 • 24" End Punch Press**

Notes



**#284 • Di-Acro Shear No. 3**

Di-Acro Shear No. 3

Notes



**#285 • 36" Pexto Shear**

Notes



**#286 • 30" Pexto No. 382D Roll Former**

Pexto No. 382D Roll Former

Notes



**#287 • NEW 48" Baileigh Box and Pan Finger Brake**

Notes



**#288 • Press Machine Parts, Hydraulic Parts**

Press Machine Parts, Hydraulic Parts

Notes



**#289 • F.P. Rosback Punch Press w/ Flat-Belt Flywheel**

Notes



**#290 • 6 Ton PFM Pneumatic Auto Press**

PFM Auto Press

Notes



**#291 • Hydraulic Press**

Hydraulic Press

Notes



**#292 • 4 Post Press Machine (Broken Handle)**

4 Post Press Machine (Broken Handle)

Notes



**#293 • Hyd-Mech H-14 Horizontal Band Saw**

Hyd-Mech H-14 Horizontal Band Saw

Notes



**#294 • Hyd-Mech H-16 Horizontal Band Saw**

Hyd-Mech H-16 Horizontal Band Saw

Notes



**#295 • Weldlogic 16" Plate Roll / Curling Machine**

Notes



**#296 • Weld Logic Inc. Seam Welder**

Weld Logic Inc. Seam Welder

Notes



**#297 • Rowe BGY-20 Coil Car Table**

Notes



**#298 • Rapid - Air Stock Reel Coil Winder/Unwinder**

Rapid - Air Stock Reel

Notes



**#299 • Stainless Steel Tub/Washer (Missing Pump)**

Notes



**#300 • Stainless Steel Tub/Washer W/Pump**

Stainless Steel Tub/Washer W/Pump

Notes



**#301 • Welding Curtains**

Welding Curtains

Notes



**#302 • John Mills & Co. Hydraulic Press**

John Mills & Co. Hydraulic Press

Notes



**#303 • 16" Lodge and Shipley Lathe**

16" Lodge and Shipley Lathe

Notes



**#304 • 32"x70" Hydraulic Heat Press**

Notes



**#305 • Boy Machines Inc. 50A Injection Mold Machine**

Boy Machines Inc. 50A Injection Mold Machine

Notes



**#308 • Rexroth 40 HP Hydraulic Power Unit**

Notes



**#309 • 10 HP Hydraulic Power Unit**

Notes



**#310 • Zeks Model 1600 HSFA400 Air Dryer**

Zeks Model 1600 HSFA400 Air Dryer

Notes



**#311 • 100 HP Kobel Co. Rotary Screw Air Compressor**

Notes



**#312 • Deltech SPX Flow Refrigerated Compressed Air Dryer**

Notes



**#313 • IR Heatless Desiccant Compressed Air Dryer**

Ingersoll Rand Heatless Desiccant Compressed Air Dryer

Notes



**#315 • 5 HP Quincy Air Compressor Model 150925-133**

Notes



**#316 • 15 HP Quincy Air Compressor Model 390**

Notes



**#317 • Mobile Welding Fume Extractor**

Mobile Welding Fume Extractor

Notes



**#318 • Linde Mig Welder**

Linde Mig Welder

Notes



**#319 • Hypertherm Powermax 1650 Plasma Cutter**

Notes



**#320 • Esab Powercut 1125 Plasma Cutter**

Notes



**#321 • Thermal Dynamics Cut Master 51 Plasma Cutter**

Thermal Dynamics Cut Master 51 Plasma Cutter

Notes



**#322 • Hobart Arc-Master 500 Welder**

Notes



**#323 • Systematics Mig 3505M Welder**

Systematics Mig 3505M Welder

Notes



**#324 • Mig Welder**

Mig Welder

Notes



**#325 • Miller Millermatic 250 Welder**

Miller Millermatic 250 Welder

Notes



**#326 • Miller Millermatic 250 Welder**

Miller Millermatic 250 Welder

Notes



**#327 • Miller CP-302 Welder**

Miller CP-302 Welder

Notes



**#328 • Miller CP-302 Welder**

Miller CP-302 Welder

Notes



**#329 • Miller Deltaweld 302 Welder, Metal Rolling Cart**

Miller Deltaweld 302 Welder, Metal Rolling Cart

Notes



**#330 • Miller Delta Weld 450 on a Metal Rolling Cart**

Miller Delta Weld 450 on a Metal Rolling Cart

Notes



**#331 • Miller Syncrowave 500 Welder**

Miller Syncrowave 500 Welder

Notes



**#332 • Miller SAH - 333 Welder on a Rolling Cart**

Miller SAH - 333 Welder on a Rolling Cart

Notes



**#333 • L-Tec VI-450 Welding System**

L-Tec VI-450 Welding System

Notes



**#334 • Air Co Heli Welder - 250 AMPs**

Air Co Heli Welder - 250 AMPs

Notes



**#335 • Airco Dip-Pak 200 Welding Machine**

Airco Dip-Pak 200 Welding Machine

Notes



**#336 • Pro Weld International Arc-500 Stud Welder**

Notes



**#337 • Miller CoolMate 3 Welder Coolant System**

Notes



**#338 • Miller CoolMate 3 Welder Coolant System**

Miller Welder - 115volts

Notes



**#339 • Miller Millermate 130 Welder - 115 Volts**

Miller Millermate 130 Welder - 115 Volts

Notes



**#340 • Lista 9 Drawer Cabinet - No Lock**

Lista 9 Drawer Cabinet - No Lock

Notes



**#341 • Lista 9 Drawer Cabinet - No Lock**

Lista 9 Drawer Cabinet - No Lock

Notes



**#342 • Lista 9 Drawer Cabinet - No Lock**

Lista 9 Drawer Cabinet - No Lock

Notes



**#343 • Vidmar Four Drawer Cabinet**

Vidmar Four Drawer Cabinet

Notes



**#344 • Vidmar Four Drawer Cabinet**

Vidmar Four Drawer Cabinet

Notes



**#345 • Vidmar Four Drawer Cabinet**

Vidmar Four Drawer Cabinet

Notes



**#346 • Lyon Five Drawer Cabinet**

Lyon Five Drawer Cabinet

Notes



**#347 • Lista Nine Drawer Cabinet - No Lock**

Lista Nine Drawer Cabinet - No Lock

Notes



**#348 • Lista Nine Drawer Cabinet - No Lock**

Lista Nine Drawer Cabinet - No Lock

Notes



**#349 • Eight Drawer Cabinet**

Eight Drawer Cabinet

Notes



**#350 • Thirteen Drawer Cabinet**

Thirteen Drawer Cabinet

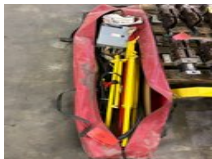
Notes



**#351 • Fifteen Drawer Cabinet**

Fifteen Drawer Cabinet

Notes



**#352 • Red Dragon Manual Propane Flare - Tank Venting Sys**

Red Dragon Manual Propane Flare - Tank Venting System

Notes



**#353 • Central Machinery English Wheel Kit With Stand**

Notes



**#354 • Bug-O Systems Track Welder - Model 1590**

Bug-O Systems Track Welder - Model 1590

Notes



**#355 • Kitagawa B-15 15" Chuck**

Kitagawa B-15 15" Chuck

Notes



**#356 • Seoam 15" Chuck**

Seoam 15" Chuck

Notes



**#357 • Wardwell Braiding Machine**

Model W16-W150-FW

Notes



**#358 • Bartell Levelmatic Wire Winding Machine**

Notes



**#359 • Sunnen Precision Square Honing Fixture Machine**

Model KKN-100

Notes



**#360 • Sunnen Cabinet with Contents**

Sunnen Cabinet with Contents

Notes



**#361 • Victaulic Pipe Grooving Machine**

Notes



**#362 • Victaulic Pipe Grooving Machine**

Notes



**#363 • Steel Belt Chip Conveyor**

Notes



**#364 • Metal Crate with Misc Hoses**

Metal Crate with Misc Hoses

Notes



**#365 • Winstar Sand Blast Tank**

Winstar Sand Blast Tank

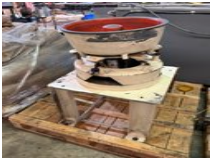
Notes



**#366 • Pallet of Sand Blasting Sand**

Pallet of Sand Blasting Sand

Notes



**#367 • Almco SR-2 Tumbler**

Notes



**#368 • Roller Bearing Press**

Roller Bearing Press

Notes



**#369 • 20" x 30" Surface Plate**

20" x 30" Surface Plate

Notes



**#370 • 18"x24" Surface Plate**

18"x24" Surface Plate

Notes



**#371 • 36"x24" Surface Plate**

36"x24" Surface Plate

Notes



**#372 • Oster Pipe Threader on Rolling Table**

Oster Pipe Threader on Rolling Table

Notes



**#373 • Lucifer Heat-Treat Furnace 0-2000 Degrees**

Notes



**#374 • Thermo Electric Co. F1740 Heat-Treat Furnace**

Notes



**#375 • Starley Roto Star Pipe Threader**  
Starley Roto Star Pipe Threader

Notes



**#376 • Bug-O System Pipe Threader**  
Bug-O System Pipe Threader

Notes



**#377 • Jennersville LINS Barfeeder**  
Jennersville LINS Barfeeder

Notes



**#378 • 48" Hydraulic Puller/Tugger/Stripper**  
With Lever Actuated Clamp

Notes



**#379 • Bradford Lathe**  
Bradford Lathe

Notes



**#380 • Victor Som-461-Lathe**  
Victor Som-461-Lathe

Notes



**#381 • South Bend Lathe**  
South Bend Lathe

Notes



**#382 • Select Machine Co. Vertical Milling Machine**  
Select Machine Co. Vertical Milling Machine

Notes



**#383 • Bridgeport Milling Machine**  
Bridgeport Milling Machine

Notes



**#384 • Jaco Coil Unwinder**

Notes



**# 384a • Rapid-Air Model SC4 PF Coil Straightener**

Notes



**#385 • Swede Vibratory Tumbler/Finishing Machine**

Notes



**#386 • Harperizer Surface Finishing System**  
Harperizer Surface Finishing System

Notes



**#387 • Swede Vibratory Tumbler/Finishing Machine**

Notes



**#389 • 10HP Vertical Spindle Grinder/Lapping Machine**  
10HP Vertical Spindle Grinder/Lapping Machine

Notes



**# 389a • Attachment for Lot 389**  
Attachment for Lot 389

Notes



**#390 • Ekstrom-Carlson and Co. No 540 Milling Machine**

Notes



**#391 • Milwaukee Model K Horizontal Milling Machine**

Notes



**#392 • American Hole Wizard 24" Radial Arm Drill**

Notes



**#393 • Johnson 60T Punch Press**

Johnson 60T Punch Press

Notes



**#394 • 34pcs of 4x8 Tongue and Groove Flooring - Used**

34pcs of 4x8 Tongue and Groove Flooring - Used

Notes



**#395 • 25pcs of 4x8 Tongue and Groove Flooring - Used**

25pcs of 4x8 Tongue and Groove Flooring - Used

Notes



**#396 • 25pcs of 4x8 Tongue and Groove Flooring - Used**

25pcs of 4x8 Tongue and Groove Flooring - Used

Notes



**#397 • Pearson 5103 12' x 1/2" Hydraulic Shear**

Notes



**#398 • Spanco Free Standing Bridge Crane - 1,000lb Cap**

Spanco Free Standing Bridge Crane - Approx. 20'x25', 1,000lb Cap

Notes



**#399 • Yale Electric Stand Up Narrow Aisle Reach Forklift**

Yale Electric Stand Up Narrow Aisle Reach Forklift 36V - 19,620HR (All Functions in Working Condition)

Notes



**#400 • Tennant 355 Propane/LP Powered Sweeper - 1692HR**

Notes



**#401 • 36V Workhog Industrial Forklift Battery**

750 AH 38"x15.5"x30.5"

Notes



**#402 • 36V Raymond Narrow Aisle, Stand-Up, Reach Forklift**

Model 20, Description: All Functions Working.

Notes



**#403 • Drexel 36 Volt Electric Fork Lift**

Tag says it works. Battery Not Included

Notes



**#404 • Yale 24V Walk Behind Electric Lift Truck**

All functions in working condition.

Notes



**#405 • 24V Raymond Pallet Jack-Working Condition**

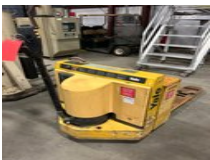
Notes



**#406 • Big Joe E30-2745, 24Volt Pallet Jack**

Internal Charger - Working Condition

Notes



**#407 • Yale 12Volt Pallet Jack - Working Condition**

Notes



**#408 • Crown Model 20MT Battery Powered Lift**

Working Condition

Notes



**#409 • Wesco Walkie/Stackie Battery Powered Lift**

Working Condition

Notes



**# 409a • Sullair LS-20S Rotary Screw Air Compressor 125 HP**

Air Cooled. Cannot verify hours.

Notes



**#410 • Drafting Table**

Notes



**#411 • Three Assorted Cabinets**

Three Assorted Cabinets

Notes



**#412 • Honeywell Electrostatic Filter / Smoke Eater**

Notes



**#413 • Thomas Green & Co. Table Saw - No. 67**

Notes



**#414 • Skid Lot of Crowd Control Barriers (14)**

Notes



**#415 • Skid Lot of Crowd Control Barriers (12)**

Notes



**#416 • Hydraulic Engine Hoist - 2 Ton**

Notes



**#417 • Skid Lot of Tooling & Misc.**

Notes



**#418 • Cumberland Plastic Granulator**

Notes



**#418a • Acer supra-618AHD Surface Grinder**  
Includes Manuals, 18"x6" Walker Magnet, Hydraulic Power Unit, and Coolant/Dust Collector.

Notes



**#419 • Kurkopp Adler Sewing Machine**

Notes



**# 419a • Durkopp Adler Sewing Machines**

Notes



# 419b • Durkopp Adler Sewing Machine

Notes



# 419c • Durkopp Adler Sewing Machines

Notes



# 419d • Singer Sewing Machine

Notes



#420 • Juki Sewing Machine

Notes



# 420a • Juki Sewing Machine

Notes



# 420b • Juki Sewing Machine

Notes



# 420c • Juki Sewing Machine

Notes



#421 • Assorted Drill Bits

Notes



#422 • Assorted Tap and Die Tools

Notes



#423 • Assortment of Tap and Dies

Notes



**#424 • Assorted Turning Tool Bits**

Notes



**#425 • Lot of Assorted Tooling, Etc.**

Notes



**#426 • Two Rolls Rubber Anti-Fatigue Mats**

Notes



**#427 • Five Rolls Rubber Anti-Fatigue Mats**

Notes



**#428 • Two Rolls Rubber Anti-Fatigue Mats**

Notes



**#429 • Two Rolls Rubber Anti-Fatigue Mats**

Notes



**#432 • 12V Yale Worksaver Electric Lift Truck - Type E**

Notes



**#433 • 12V Yale Worksaver Electric Lift Truck - Type E**

Notes



**#434 • Crown 36V Narrow Aisle, Stand-Up Reach Forklift**

Notes



**#435 • Scout 37B Floor Sweeper**

Notes



**#436 • Tennant Floor Scrubber**

Notes



**#437 • Wesco Pallet Jack**

Notes



**#438 • Wesco Pallet Jack**

Notes



**#439 • Pallet Jack**

Notes



**#440 • Dayton Pallet Jack**

Notes



**#441 • Bishamon Pallet Jack**

Notes



**#442 • Global Pallet Jack - 5500lbs**

Notes



**#443 • Pallet Jack**

Notes



**#444 • Nordson Powder Coat Paint Booth**  
Powder Coat System

Notes



**#445 • Nordson Paint Booth Spare Cartridge Filter**

Notes



**#451 • 40' Sea Container**  
40' Sea Container

Notes



**#452 • 40' Sea Container**  
Some damage by the door

Notes



**#453 • 40' Sea Container**  
Some damage by the door

Notes



**#454 • 40' Sea Container**  
Some damage by the door

Notes



**#455 • Cedar Creek Camper - Parts Camper - No Title**  
Cedar Creek Camper - Parts Camper - No Title

Notes



**# 455a • Chevy Flat Bed Work Truck**  
Approximately 98,259miles - Milage does start over at 100,000 so milage is approximate only

Notes



**# 455b • Large Lot of Toilet Bases - As Is**

Notes



**# 455c • Eljer High Gloss China Lavatory Skid Lot**

Notes



**#456 • 20' Sea Container - Damaged Side**  
20' Sea Container - Damaged Side

Notes



**#457 • 20' Sea Container**  
20' Sea Container

Notes



**#458 • 20' Sea Container**

20' Sea Container

Notes



**#459 • 20' Sea Container - Shelving Inside**

20' Sea Container - Shelving Inside

Notes



**#460 • Thorid-Gema Powder Coat Paint Booth**

Primary photos used in this lot are prior to the system being dismantled and relocated to its current location. Subject to Bulk Bid Lot 466. The greater of

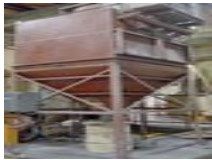
Notes



**#461 • Thorid-Gema Powder Coat Paint Booth**

Primary photos used in this lot are prior to the system being dismantled and relocated to its current location. Subject to Bulk Bid Lot 467. The greater of

Notes



**#462 • Dust Collection Tank W/Filter**

Primary photos used in this lot are prior to the system being dismantled and relocated to its current location. Subject to Bulk Bid Lot 466. The greater of

Notes



**#463 • Dust Collection Tank W/Filter**

Primary photos used in this lot are prior to the system being dismantled and relocated to its current location.

Notes



**#464 • Cyclone System**

Primary photos used in this lot are prior to the system being dismantled and relocated to its current location. Subject to Bulk Bid Lot 466. The greater of

Notes



**#465 • Cyclone System**

Primary photos used in this lot are prior to the system being dismantled and relocated to its current location.

Notes



**#466 • Bulk Bid Lot 460, 462, 464**

Thorid Automatic Powder Booth, Dust Collection, Cyclone System w/ Updated ITW GEMA PGC1 Control & PG2-AX Guns, Gun Control Oscillator, 144" Vertical Paint

Notes



**#467 • Bulk Bid Lots 461, 463, 465**

Thorid Automatic Powder Booth, Dust Collection, Cyclone System w/ Updated ITW GEMA PGC1 Control & PG2-AX Guns, Gun Control Oscillator, 144" Vertical Paint

Notes



**#469 • Mitsubishi CNC Laser Cutting Machine**

Notes



**#470 • Mayfran Chip Conveyor Belt**

Notes



**#471 • Waukesha-Diesel (Model 6WAKDSU)**  
Waukesha-Diesel (Model 6WAKDSU)

Notes



**#472 • Caterpillar G379 Diesel With EM Demac Generator**  
Caterpillar G379 Diesel With EM Demac Generator

Notes



**#473 • Powered Tank Turner / Welding Rolls**  
Powered Tank Turner / Welding Rolls

Notes



**# 473a • Free standing bridge crane**

Notes



**#474 • Pallet of Parking Blocks (11)**  
Pallet of Parking Blocks (11)

Notes



**#475 • Concrete Water Basin**  
Concrete Water Basin

Notes



**#476 • Concrete Slab 19' x 8' x 30"**  
Concrete Slab 19' x 8' x 30"

Notes



**#477 • Concrete Slab 19' x 8' x 30"**  
Concrete Slab 19' x 8' x 30"

Notes



**#478 • Concrete Slab 6' x 5' x 25"**

Concrete Slab 6' x 5' x 25"

Notes



**#479 • Concrete Slab 7' x 80" x 30"**

Concrete Slab 7' x 80" x 30"

Notes



**# 479a • Vintage Wagon Coach - Five Rows of Seats**

Notes



**# 479b • Large Wagon**

Notes



**# 479c • (60)Unex Span-Track 'Shelf-Less' Carton Flow Track**

By the Piece - 60 Times your Bid

Notes



**# 479d • (60)Unex Span-Track 'Shelf-Less' Carton Flow Track**

By the Piece, 60 Times your bid

Notes



**# 479e • (60)Unex Span-Track 'Shelf-Less' Carton Flow Track**

By the Piece, 60 Times your Bid

Notes



**# 479f • (60)Unex Span-Track 'Shelf-Less' Carton Flow Track**

By the Piece, 60 Times your bid

Notes



**# 479g • (60)Unex Span-Track 'Shelf-Less' Carton Flow Track**

By the Piece, 60 Times your Bid

Notes



**# 479h • (60)Unex Span-Track 'Shelf-Less' Carton Flow Track**

By the Piece, 60 Times your Bid

Notes



**#480 • JTec Industries 102"x50" Carts on Wheels**

JTec Industries 102"x50" Carts on Wheels

Notes



**#481 • JTec Industries 102"x50" Carts on Wheels**

JTec Industries 102"x50" Carts on Wheels

Notes



**#482 • JTec Industries 102"x50" Carts on Wheels**

JTec Industries 102"x50" Carts on Wheels

Notes



**#483 • JTec Industries 102"x50" Carts on Wheels**

JTec Industries 102"x50" Carts on Wheels

Notes



**#484 • JTec Industries 102"x50" Carts on Wheels**

JTec Industries 102"x50" Carts on Wheels

Notes



**#485 • JTec Industries 102"x50" Carts on Wheels**

JTec Industries 102"x50" Carts on Wheels

Notes



**#486 • JTec Industries 102"x50" Carts on Wheels**

JTec Industries 102"x50" Carts on Wheels

Notes



**#487 • Pack Mule Cart on Wheels, 52" x 40"**

Pack Mule Cart on Wheels 52" x 40"

Notes



**#488 • Pack Mule Cart on Wheels, 52" x 40"**

52" x 40"

Notes



**#488a • Pack Mule Cart on Wheels, 52" x 40"**

Notes



**#488b • Pack Mule Cart on Wheels, 52" x 40"**

Notes



**#488c • Pack Mule Cart on Wheels, 52" x 40"**

Notes



**#488d • Pack Mule Cart on Wheels, 52" x 40"**

Notes



**#488e • Pack Mule Cart on Wheels, 52" x 40"**

Notes



**#489 • Concrete Water Basin**  
11' x 8'High x 5'

Notes



**#490 • Concrete Water Base**  
16' x 10'High x 6'

Notes



**#491 • Blue Bird School Bus (2000), Cummins Diesel**  
114,452.2 Miles

Notes



**#492 • 2003 Chevrolet 3500 Dump Work Truck, 4WD**  
Comes with Two Snow Plows. Bed has some Rust, Dead Battery, Out of Inspection and Miles are Unknown

Notes



**#493 • 2002 Chevrolet 3500 Pickup Truck, Stake Body Bed**  
Dually Truck, Bed has Rust. Dead Battery, Out of Inspection and Unknown Miles

Notes



**#494 • Beaver-Tail Tilting Flatbed Trailer - GVWR 9996lbs**

Notes



#495 • Spray Paint Booth 16' x 50' x 16'

Notes



#496 • Concrete Water Tank Basin

Notes



#497 • Concrete Water Tank Basin

Notes



#498 • Concrete Water Tank Basin

Notes



#499 • Concrete Water Tank Basin

Notes



#500 • Concrete Water Tank Basin

Notes



#501 • Concrete Water Tank Basin

Notes



#502 • Concrete Water Tank Basin

Notes



#503 • Concrete Water Tank Basin

Notes



#504 • Concrete Water Tank Basin

Notes



#505 • Concrete Water Tank Basin

Notes



#506 • Concrete Water Tank Basin

Notes



#550 • Wesco Manual Hydraulic Ergonomic Drum Lifter

Model DM-1100 1100lb capacity.

Notes



#551 • Southworth PalletPal Roll-On Level Loader

Model R.OLLC2.24 2000lb capacity.

Notes



#552 • Southworth PalletPal Roll-On Level Loader

Model R.OLLC2.24 2000lb capacity.

Notes



#553 • Parker Fluid Systems Hydraulic Oil Filter Cart

Model 10MF-40SA-10C-1 Electric, 115V.

Notes



#554 • Hertner 36V Battery Charger

Model TW18-865

Notes



#555 • Hertner 24V Battery Charger

Model TW12-775

Notes



#556 • Hertner 24V Battery Charger

Model TN-12-1050

Notes



#557 • Hertner 24V Battery Charger

Model TN-12-1050

Notes



**#558 • Ametek 36V Battery Charger**  
Model 1050H3-18G

Notes



**#559 • Unmarked Masonry Saw**  
Electric, 3ph, 208-230/460V.

Notes



**#560 • GNB Industrial Power 36V Battery Charger**  
Model SCR20018965T1H

Notes



**#562 • MK Diamond Products Masonry Saw**  
Model 169330-20 MK-5010T H-DUTY Electric, 3ph, 208-230/460V.

Notes



**#563 • Bomco Masonry Saw**  
Machine No. 21201

Notes



**#564 • Onsrud Overarm Pin Router**  
Model W-1124 Serial 8550

Notes



**#565 • Ramco Wide Belt Sander**  
Model 37T Serial 3149 Electric, 3ph, 230V.

Notes



**#566 • Hutchinson Handy Hutch Industrial Table Saw**  
Machine No. 971

Notes



**#567 • H.B. Rouse & Co Industrial Band Saw**  
H.B. Rouse & Co Industrial Band Saw

Notes



**#568 • Donaldson Torit Mist Collector System**  
Electric, 3ph, 208-460V.

Notes



**#569 • Donaldson Torit Mist Collector System**

Model WSO 15-1 Electric, 3ph, 208-460V.

Notes



**#570 • Air Caster Corp Material Lift Table**

Model D-1276-1 2000lb capacity.

Notes



**#571 • Air Caster Corp Material Lift Table**

Air Caster Corp Material Lift Table

Notes



**#572 • Air Caster Corp Material Lift Table**

Air Caster Corp Material Lift Table

Notes



**#573 • Autoquip Series 35 Scissor Lift Table**

4000lb capacity.

Notes



**#575 • Shark Portable Heated Pressure Washer**

Shark Portable Heated Pressure Washer

Notes



**#576 • Karcher Hydro Blitz 700PSI Pressure Washer**

Model 07357 Electric 1ph, 115V.

Notes



**#577 • Landa Cold Water Pressure Washer**

Model PDE4-3000

Notes



**#578 • Karcher Pressure Washer**

Model HDS 755 Electric, 1ph, 208-240V.

Notes



**#581 • Airflow Systems Inc Mist Filter System**

Airflow Systems Inc Mist Filter System

Notes



**#582 • Unmarked Air Filtration System**  
Unmarked Air Filtration System

Notes



**#583 • Patton Industrial Heavy Duty Pedestal Fan**  
Patton Industrial Heavy Duty Pedestal Fan

Notes



**#584 • Chicago Blower**  
Serial 272529 Electric, 3ph, 460V.

Notes



**#585 • TTP Heat Exchanger**  
Model AO-5-99837

Notes



**#586 • TTP Heat Exchanger**  
Model AO-5-99837

Notes



**#587 • TTP Heat Exchanger**  
Serial RAG223671

Notes



**#588 • Vickers Hydraulic Pump & G-Valve**  
See pictures.

Notes



**#589 • Hydraulic Power Unit**  
Powered by an electric, 3ph, 230/460V industrial motor.

Notes



**#590 • Reservoir Tank**

Notes



**#591 • EFD MicroCoat System**

Notes



**#592 • EFD MicroCoat System**

Notes



**#594 • EFD MicroCoat System**  
Model MC4000

Notes



**#595 • EFD MicroCoat System**

Notes



**#596 • (2) EFD MicroCoat Systems**

Notes



**#597 • Graco Pressure Pot**  
Exact capacity unknown.

Notes



**#598 • Titan Epic 660 Paint Sprayer**

Notes



**#599 • Almi Abrasive Tube Notching Machine**  
Type AL100U. Electric, 230V.

Notes



**#600 • New England Butt Co Braiding Machine**

Notes



**#601 • Cutting Machine**  
Electric, 3ph, 480V.

Notes



**#602 • Service Engineering Inc Vibratory Feeder Bowl**  
With hopper.

Notes



**#603 • Service Engineering Inc Vibratory Feeder Bowl**

With hopper. model 4742 9/89, 112V.

Notes



**#604 • Service Engineering Inc Vibratory Feeder Bowl**

With hopper. Model 6046 2/93 Electric, 115V. .

Notes



**#605 • Service Engineering Inc Vibratory Feeder Bowl**

With hopper. Electric,

Notes



**#606 • Service Engineering Inc Vibratory Feeder Bowl**

With hopper. Electric.

Notes



**#607 • Service Engineering Inc Vibratory Feeder Bowl**

With hopper. Model 2/79 1738. Electric, 115V.

Notes



**#608 • Turmoil Refrigerated Closed Loop Oil Chiller**

Model OC-150 R. Electric, 3ph, 460V.

Notes



**#609 • CEIA Power Cube Generator**

Model PW3-180/200. Portable. Comes with power controller & induction heater

Notes



**#610 • Lincoln Industrial Pressure Primer**

Gauges, Lincoln air brake controls, Lincoln Pile Drive III pump. See pictures.

Notes



**#611 • Variable Transformer**

Notes



**#612 • Hyfra Pedia Chiller**

Model VWK 70-1-S.

Notes



**# 612a • Hyfra Pedia Chiller**  
Model VWK 70-1-S.

Notes



**#613 • Graco Pro Gun Washer**

Notes



**#614 • Graymills Pumping System**  
See pictures for additional specs.

Notes



**#615 • (3) Cylinders & Spare Parts for RetroFit Press**

Notes



**#616 • Torch Cart & (2) 100' Reels Galvanized Chain**

Notes



**#617 • Paint Booth W/Duct Work & Motor**

Notes



**#618 • Delta Dust Collector**  
Model 50-850

Notes



**#619 • Automation Associates Inc. Rotary Transfer Machine**  
Adds rubber washer to screws

Notes



**#620 • Motor Mount w/ Straight Nine Motor**  
See pictures.

Notes



**#621 • Pallet Stretch Wrapper/Rotary Table**

Notes



**#622 • Portable Rotary Table**

Notes



**#623 • Portable Rotary Table**

Notes



**#624 • Hastings Heater**  
Model F-250X

Notes



**#625 • Dayton Infra-Red Radiant Heater**  
Model 3E133D. Electric, 120V.

Notes



**#626 • Dayton Infra-Red Radiant Heater**  
Model 3E134E. Electric, 120V.

Notes



**#627 • Dayton Infra-Red Radiant Heater**  
Model 3E134E. Electric, 120V.

Notes



**#628 • Dayton Infra-Red Radiant Heater**  
Model 3E134E. Electric, 120V.

Notes



**#629 • Portable Drum Dumper**  
Capacity unknown.

Notes



**#630 • Morse Drum Dumper**  
800lb capacity.

Notes



**#631 • (5) Rolls of Rubber**

Notes



**#632 • Skid Lot - Interlocking Floor Mats & Thresholds**

Notes



**#633 • Unmarked Floor Scale?**  
See pictures.

Notes



**#634 • Leeson 3PH 208-230/460V Motor**

Notes



**#635 • Sperian Emergency Eye Wash Station**

Notes



**#636 • Global Industrial Work Station**

Notes



**#637 • Hannay Reel**

Notes



**#638 • Weg W21 Severe Duty 208-230/460V Motor**

Notes



**#639 • Greenlee 1818 Mechanical Conduit Bender**  
Appears to be just the attachments.

Notes



**#640 • (3) Adjustable Stands**

Notes



**#641 • Work Table**

Notes



#642 • Greenlee Storage Box & Contents

Notes



#643 • Greenlee 1818 Conduit Bender

Notes



#644 • Manual Pipe Benders

Notes



#645 • Parker Rack & Pinion Rotary Actuator

Notes



#646 • Kraft Paket Pneumatic Cylinders & Numatics Valves

Notes



#647 • Rexroth Cylinders

Notes



#648 • (2)Festo Pneumatic Regulators & Assorted Cylinders

See pictures.

Notes



#649 • (3) Festo Compact Pneumatic Cylinders

#8342 Model DSBC-50-203-CF-PPVA (1463770)

Notes



#650 • Lot of Assorted Cylinders

Notes



#651 • Skid Lot - Wood Tiles

See pictures.

Notes



**#652 • Skid Lot - Assorted Cylinders**

See pictures.

Notes



**#653 • Skid Lot - Assorted Cylinders**

See pictures.

Notes



**#654 • (5) Assorted Cylinders**

Notes



**#655 • (5) Assorted Cylinders & SMC Cylinders w/ Tanks**

Notes



**#656 • (2) Pneumatic Swing Clamp Cylinders**

Notes



**#657 • (2) Pneumatic Swing Clamp Cylinders**

Notes



**#658 • (2) Pneumatic Swing Clamp Cylinders**

Notes



**#659 • (2) Pneumatic Swing Clamp Cylinders**

Notes



**#665 • (16) Chairs**

Notes



**#666 • Skid Lot - All Thread, Hoses, Additional Hardware**

See pictures.

Notes



**#667 • Torch Cart & (3) Rolls of Wire**

Notes



**#668 • (4) 5GAL Gas Cans**

Notes



**#669 • Craftsman Shop Vac**

Notes



**#670 • Craftsman Belt/Disc Sander**

Notes



**#671 • Central Pneumatic 21GAL Vertical Air Compressor**

Notes



**#672 • Adjustable Roller Stand & Grates**

Notes



**#673 • Skid Lot - Industrial Lube, Inert Gas Control**

See pictures.

Notes



**#674 • Skid Lot - Regulators, Hoses, More**

See pictures.

Notes



**#675 • (4) RAB Fluorescent Lights, (2) Cooper Lights**

See pictures for additional specs.

Notes



**#676 • (18) Simkar Fluorescent Lights**

Notes



#677 • Skid Lot - Heat Lamps

Notes



#678 • (3) Cases of Hilti Concrete Anchors

Notes



# 678a • (3) Cases of Hilti Concrete Anchors

Notes



# 678b • (3) Cases of Hilti Concrete Anchors

Notes



#679 • Skid Lot - Assorted Bolts, Washers, More

See pictures.

Notes



#680 • Skid Lot - Assorted Bolts, End Caps, & More

See pictures.

Notes



#681 • Skid Lot - Assorted Filters

Notes



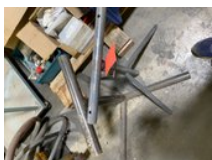
#682 • Skid Lot - Torch Hoses, Wire, & More

Notes



#683 • Skid Lot - Cables, Filters, Air Hose, More

Notes



#684 • (2) Adjustable Stands

Notes



**#685 • Briggs & Stratton Industrial Series Water Pump**

Notes



**#686 • Portable Dust Collector**

Notes



**#687 • Skid Lot - Belts & Additional Hardware**  
See pictures.

Notes



**#688 • Torch Cart w/ Gauges, Torch Head, & Hose**

Notes



**#689 • Hot Shot Electric Steam Boiler**

Notes



**#690 • Wire Feeder & Hydraulic Pump**

Notes



**#691 • Pneumatic Punch Press?**

Notes



**#692 • (2) Wooden Panels**

Notes



**#693 • Protemp Kerosene Space Heater**  
Model PT-175T-KFA.

Notes



**#694 • Barrel Truck**

Notes



**#695 • Barrel Truck**

Notes



**#696 • Knipco Portable Heater**

Notes



**#697 • Portable Heater**

Notes



**#698 • Portable Heater**

Notes



**#699 • Tapco Port-O-Brake**

Notes



**#700 • Skid Lot - Cylinders, Asst. Electrical Components**

Notes



**#701 • Skid Lot - Spindle Servo Units**

Notes



**#702 • Skid Lot - Stone Tile**

Notes



**#703 • Skid Lot - Stone Tile**

Notes



**#704 • Skid Lot of Hip Waders**

Notes



**#705 • Granite Table/Stand?**

Notes



**#706 • Skid Lot of Anti Skid Tiles**

Notes



**#707 • Colortrend 888 Machine Colorant & Abco Abficide**

Notes



**#708 • Skid Lot - Roller Covers, Caulk Gun, Brushes, More**  
See pictures.

Notes



**#709 • Assorted Grinding Wheels & Sharpening Stones**

Notes



**#710 • Skid Lot - 40lb Bags SPC Universal Granular**

Notes



**#711 • Skid Lot - 40lb Bags SPC Universal Granular**

Notes



**#712 • Skid Lot - Assorted Filters**

Notes



**#713 • GSI Lumonics HM1400 Laser Marker**

Notes



**#714 • Lee Laser Laser Controller w/ Power Supply**

Notes



#715 • Tek Temp Chiller

Notes



#716 • Hydraulic Power Pack Power Unit

Notes



#717 • Skid Lot - Assorted Hardware, Outlet Covers, More  
See pictures.

Notes



#719 • Clamps, Regulator, Assorted Hardware

Notes



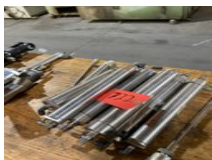
#720 • Hydraulic Cylinder

Notes



#721 • Nitra Hydraulic Cylinders

Notes



#722 • Nitra Hydraulic Cylinders

Notes



#723 • Cylinder

Notes



#724 • Assorted Tool Posts

Notes



#725 • Cylinder

Notes



**#726 • Sullair ES-8 Rotary Screw Air Compressor**  
ISO 9001 Compressor

Notes



**#727 • Sullair ES-8 Rotary Screw Air Compressor**  
Missing Motor

Notes



**#728 • Linear Actuators & Rail**

Notes



**#729 • Air Tank w/ Valve & Hoses**

Notes



**#730 • Portable Work Cart & Contents**

Notes



**#731 • (3) Traffic Delineators**

Notes



**#732 • Skid Lot - Lunch Trays, Club Wipes, Portion Cups & more. See pictures.**

Notes



**#733 • Skid Lot - CUI Solutions Surface TB Cleaner**  
Each case contains (12) 32oz bottles.

Notes



**#734 • Skid Lot - H2O One Hand Sanitizer**

Notes



**#735 • (104x's Bid) Totes w/ Flip Top Lids**  
By the tote 104 times the bid

Notes



#736 • Plastic Bulk Shipping Container

Notes



#737 • Collapsible Metal Cage Shipping Container

Notes



#738 • Table With Motor/Pump

Notes



#739 • Pneutech Rousseau Pump  
Model 1833609

Notes



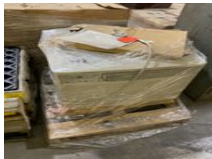
#740 • Banjo Drum Funnel & Drum w/ Valve

Notes



#741 • Heavy Duty Pallet & Containers

Notes



#742 • Electric Window Air Conditioner Unit

Notes



#743 • 2-Door Glass Front Vertical Cabinet & Contents

Notes



#744 • 2-Door Glass Front Vertical Cabinet & Contents

Notes



#745 • 2-Door Cabinet w/ Work Top & Contents

Notes



**#746 • 60-Drawer Filing Cabinet System**

Notes



**#747 • 2-Door Vertical Metal Cabinet**

Notes



**#748 • 2-Door Vertical Metal Cabinet**

Notes